

Integrating low-cost RTK positioning services with a web-based track log management system

Daisuke Yoshida, Eugenio Realini, Mirko Reguzzoni and Venkatesh Raghavan

Citation	Applied Geomatics, 5(2): 99-108
Issue Date	2013-02-05
Type	Journal Article
Textversion	author
Rights	This version of the article has been accepted for publication, after peer review (when applicable) and is subject to Springer Nature's AMterms of use, but is not the Version of Record and does not reflect post-acceptance improvements, or any corrections. The Version of Record is available online at: https://doi.org/10.1007/s12518-013-0098-4 Springer Nature's AM terms of use: https://www.springernature.com/gp/open-research/policies/accepted-manuscript-terms
DOI	10.1007/s12518-013-0098-4

Self-Archiving by Author(s)
Placed on: Osaka City University Repository

Integrating Low-cost RTK Positioning Services with a Web based Track Log Management System

Daisuke Yoshida[†], Eugenio Realini^{††}, Mirko Reguzzoni^{†††} and Venkatesh Raghavan^{††††}

[†] Faculty of Liberal Arts, Tezukayama Gakuin University, 2-1823 Imakuma, Osakasayama City, Osaka 589-8585, Japan. e-mail: yoshida@la.tezuka-gu.ac.jp

^{††} Research Institute for Sustainable Humanosphere, Kyoto University, Gokasho, Uji City, Kyoto 611-0011, Japan.

^{†††} DIIAR, Politecnico di Milano, P.za Leonardo da Vinci 32, Milan 20133, Italy.

^{††††} Graduate School for Creative Cities, Osaka City University, 3-3-138 Sugimoto, Sumiyoshi-ku, Osaka 558-8585, Japan.

Abstract

Location-based collaborative platforms are proving to be an effective and widely adopted solution for geo-spatial data collection, update and sharing. Popular collaborative projects like OpenStreetMap, Wikimapia and other services that collect and publish user-generated geographic contents have been fostered by the increasing availability of location-aware devices. These instruments include Global Positioning System (GPS) enabled phones and low-cost GPS receivers, which are employed for quick field surveys at both professional and non-professional levels. Nevertheless, the data collected with such devices are often inaccurate. To alleviate this drawback, an integration of modern web technologies and online services with an advanced positioning technique is implemented. A web-based prototype for quality-based data selection of GPS tracks, managing track logs and Point of Interests (POIs) is integrated with the goGPS software. This combined system applies the principle of Real-time Kinematic (RTK) positioning to low-cost single-frequency receivers. The workflow consists of acquiring the raw GPS measurements from the user's receiver and from a network of GPS stations, processing data by RTK positioning through the goGPS Kalman filter algorithm, sending the accurate positioning data to the web-based system, performing further quality enhancements, and logging and displaying the data. Tests were performed in open areas and various dense urban environments, comparing the results obtained by standard GPS devices and by goGPS RTK positioning. Results were promising and suggest that the integration of web technologies with advanced geodetic techniques applied to low-cost instruments can be an effective solution to collect, update and share accurate location data on collaborative platforms.

Keywords: Point of Interest (POI), Location Based Service (LBS), Global Positioning System (GPS), goGPS, Quality-based data selection of GPS tracks

1. Introduction

1.1 Background

The latest efforts in technological advancement are gathering more and more computational capabilities, wireless connection tools and storage capacity on small devices such as smartphones. Nowadays, most of these devices incorporate also GPS chipsets, which allow users to interact spatially with the Web 2.0 by geo-locating features and events; this merging between geographical and digital worlds is giving rise to what is commonly known as the GeoWeb (Leclerc 2001). One of the main reasons that drive hardware producing companies to embed GPS chipsets into mobile devices is to provide users with Location Based Service (LBS) where wireless connectivity is available. Yoshida *et al.* (2010) developed a web system for managing Point of Interest (POI) and GPS track log data in order to achieve an effective framework for field surveying. The track log management function provided an interactive interface for log

management and data enhancement. The POI management function facilitates a collaborative framework for building POIs with multiple users together through the Internet.

Tagging web contents with geographic information (i.e. geo-tagging) has become a common feature on most Web 2.0 applications. For example, online photo management and sharing applications like Picasa¹ and Flickr² geo-reference photos either automatically, using coordinates stored in EXIF data (metadata associated to digital photos), or by letting users locating them on a map. Also places and historical events described in Wikipedia³ can have coordinates associated to them, that through GeoHack⁴ can be passed to dozens of other location-aware web services, to get more location-based information. Location can then be associated to many different kinds of information made available on the web (e.g. blog posts, news, events, shops with the products they sell, etc.), bridging in this way the digital and real worlds. This kind of geo-tagging usually does not require highly accurate location data, thus it is often sufficient to use a standard low-cost GPS device or even just clicking on a map. Nevertheless, there are some web applications for collaborative surveys, for example OpenStreetMap⁵, that would benefit from getting more accurate GPS data, possibly with metadata about their accuracy level, in order to automatize as much as possible the map updating process and to provide end-users with an estimation of the level of error for the data they are going to use.

1.2 Low-cost GPS positioning

There are various grades of GPS devices and the cost of different devices depends on their hardware quality. This research targets low-cost GPS receivers, which costs some hundreds dollars, in order to lower the cost of highly accurate data, which could be a crucial element to further widen location-based services or business.

There are several issues in using consumer-level low-cost GPS receivers such as Garmin, TomTom or Globalsat products. These devices provide only the processed solution in output, by means of the de-facto standard GPX or NMEA formats, but they do not provide users with the ability to access GPS raw data (i.e. GPS code and phase observations). Raw data are employed by these devices for their own positioning process, normally within black-box algorithms, but only the resulting position information is given in output, together with some metadata information such as the number of satellites, Dilution of Precision (DOP) values, and so on. This means that users cannot modify or tune positioning algorithms to improve the accuracy of the result for specific applications.

One of the open source software for enhancing GPS positioning is goGPS⁶ (Realini 2009) that utilize GPS raw data to enhance the quality of GPS positioning by applying relative positioning with respect to a GPS master station. This software has the potential to achieve the accuracy at sub-meter level such as 40cm~80cm (Pertusini *et al.* 2010; Yoshida 2011). In this research, goGPS was adopted as a positioning engine with low-cost GPS receivers since the positioning process can be made available as a standardized web service (Yoshida 2011; Realini *et al.* 2012) to be used for various applications and services.

goGPS can significantly mitigate GPS errors (e.g. clock synchronization errors or atmospheric effects on the signal) and enhance positioning accuracy. However, the software needs to be installed on PCs and the operations are cumbersome for users. Therefore, a web-based prototype system for track log management system (Yoshida *et al.* 2010) was integrated with goGPS positioning to support goGPS data management and also to provide a collaborative framework for multiple users. Further, a new quality-based data selection method for effectively eliminating inaccurate track log points, especially, caused mainly by multi-path in dense urban environment. The method used an index based on the Kalman filter (KF) error covariance matrix (Kalman 1960; Grewal and Andrews 2001) and some tests were conducted to clarify the effectiveness of the developed index in this research.

This research investigates three aspects of the improvement of low-cost GPS positioning:

- 1 - applying single-frequency (L1) Real-Time Kinematic (RTK) positioning to low-cost devices by goGPS open source software;
- 2 - integrating web based track log management system with goGPS positioning service;

¹ <http://picasaweb.google.com>

² <http://www.flickr.com>

³ <http://www.wikipedia.org>

⁴ <https://wiki.toolserver.org/view/GeoHack>

⁵ <http://www.openstreetmap.org>

⁶ <http://www.gogps-project.org>

3- implementing a suitable index for filtering out poorly positioned points.

2. System architecture and implementation

2.1 goGPS architecture

goGPS is MATLAB⁷ based open source software package that gets raw GPS data (code pseudorange, carrier phase, signal-to-noise ratio, ephemeris and timing) in input and processes them within a KF specifically developed to apply RTK and address low-cost GPS navigation issues. goGPS KF can optionally include additional sources of data such as Digital Terrain Models (DTMs) or line networks in order to improve the final positioning. goGPS receives data both from a low-cost receiver through a COM port and from a master station, belonging or not to a network of permanent GNSS stations, through the Internet via NTRIP protocol (Fig. 1). At the moment goGPS is capable of retrieving GPS raw data for the roving receiver from u-blox LEA modules ("T" version), Fastrax IT03 modules and SkyTraq S1315F-RAW modules, by decoding their proprietary binary formats; as for the base GNSS station data, the RTCM 3.1 format is supported. goGPS can run either in real-time or post-processing mode, synchronizing the rover and master data streams and managing temporary outages or permanent data losses. Various events such as satellite additions/losses, change of pivot satellite (highest satellite used for double differences) and cycle-slips are managed.

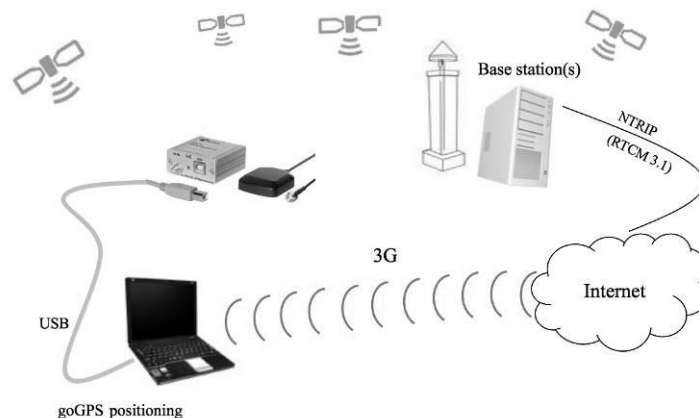


Fig. 1 Overview of goGPS double difference observations using a GPS master station

goGPS main targets are single-frequency low-cost devices, but its code and phase modules are designed to work either in single-frequency or double-frequency mode. Therefore, it can be used also with double-frequency receivers, if it is needed. goGPS includes also an alternative version of its main Kalman filter algorithm, designed to obtain line-constrained positioning (e.g. to navigate on a network of roads). For a detailed description of goGPS Kalman filter, see Realini (2009).

Despite the latest technology trends are shifting from System-On-Chip (SOC) architectures to host-based or server-based one, the majority of people (and some manufacturers) when dealing with GPS positioning engines still think in a SOC direction. Although goGPS was not explicitly designed since the beginning with this distinction in mind, it has naturally become a host or server based system for at least three reasons:

- 1- it has been first developed as a tool for studying and teaching GPS positioning in a MATLAB environment;
- 2- applying RTK requires access to raw GPS observations, which means at least time-of-week, code pseudorange and carrier phase;

⁷ <http://www.mathworks.co.jp>

- 3- it has been developed with the concept of Free and Open Source Software (FOSS) and open data policy as its foundations. In order to let developers have the greatest freedom over how to implement their own positioning engines, GPS raw observations must be available and typically they will be processed on their host systems or servers.

In order to make the goGPS positioning open and widely available in various applications or services, Yoshida (2011) and Realini *et al.* (2012) implemented the goGPS positioning process as a web service compliant to international standards. The definition of Web Processing Service (WPS) is provided among the Open Geospatial Consortium (OGC) Web Services (OWS) specifications (The Open Geospatial Consortium 2003). OWS are key elements that can provide efficient ways to distribute data and processing results to various GPS enabled clients. The goGPS WPS-compliant positioning service was implemented using ZOO⁸ (Fenoy *et al.* 2010), one of the available open source WPS engines, which provides a standard processing service through the web. Fig. 2 shows a web interface for goGPS positioning using OpenLayers⁹, which can select and upload the required GPS datasets in input and send a WPS request to ZOO for executing goGPS. The web client shows the result that is returned from the server as the white line in the Fig. 2.



Fig. 2 Positioning result displayed in the goGPS web interface

In this example, three RINEX files are used as input datasets: an observation file containing raw data for the GPS rover (*JENOBAtest_03_rovers.obs*), a navigation file containing satellite ephemeris and ionosphere parameters (*Vb20.10n*) and an observation file containing raw data for the master station (*Vb20.10o*). By accessing the URL from a browser, the RINEX files, which were previously uploaded on the server by the web interface (Fig. 2), are parsed to extract the GPS raw data; the GPS observations are then processed by goGPS and the result is stored in a KML file which is downloaded through the browser itself after a few seconds from having issued the URL request. In addition, the displayed tracks can be stored in a database by clicking “Store the GPS track on the server” link in the OpenLayers interface and can also be searched in the POI management system that is explained in the following section.

2.2 Web-based track log management system architecture

Yoshida *et al.* (2010) developed a web-based track log & POI management system that can import, manage and display GPS track logs together with POIs such as geo-referenced photos

⁸ <http://www.zoo-project.org>

⁹ <http://openlayers.org>

and videos. The system was integrated with the goGPS positioning engine as described in the previous section in order to provide higher accuracy of positioning and interoperable service. The architecture of the system can be divided into three components (Fig. 3).

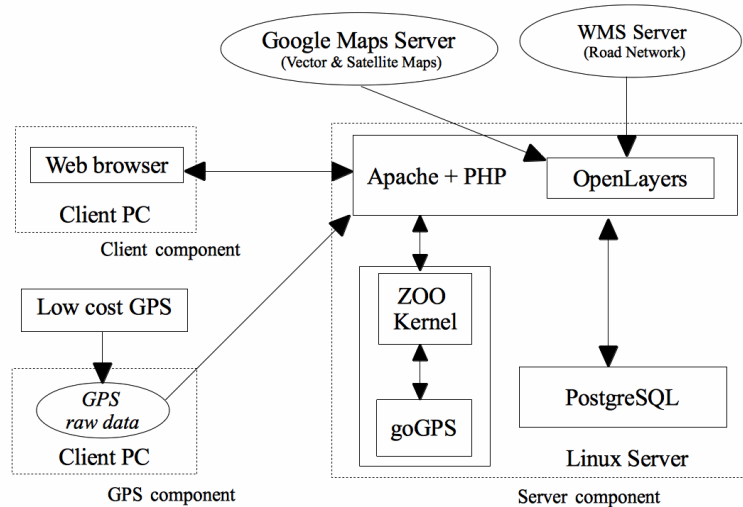


Fig. 3 The three components of the track-log management system

The first is the GPS component that collects GPS raw data to be sent to the server for processing. The second is the server component that provides data archiving and the goGPS positioning service, which was shown in Fig. 2. The second is the server component that provides data archiving and geospatial services. The third is the client component for viewing GPS locations and track logs. In particular, the server component enables searches within track logs and tracking services to the client components through HTTP.

The system connects a Flickr photo album with a GPS track log by implementing the Flickr web API, and it also provides its function as a web service. The implemented web services are based on standard HTTP communication, so that the user does not need to install any special software in order to use them. Service requests can be made directly through a browser, making the web services straightforward and easy to use. These open web APIs help reducing redundant work and development costs. The below URL is to search GPS track logs from the database. The user inputs the parameters such as date, time interval or DOP to search and filter the GPS tracks data. The request URL returns an XML like document as a result that displays the track logs in OpenLayers interface.

```
http://SERVER_ADDRESS/DP/filtering_simplify.php
?address=%25
&stime=00%3A00%3A00
&etime=23%3A59%3A00
&sdate=2009-08-12
&hdop=3
&gpsmode=3
```

The system allows users to query and display track logs interactively by selecting date, time, IP address of GPS tracking components, GPS positioning status (i.e. 2D, 3D fix and no fix mode), number of satellites and DOP on OpenLayers web interface.

2.3 POI management with Flickr service

Recently, many increasingly popular web applications for building POIs, such as Flickr and Google Picasa Web Album, have been implementing web-mapping functions. Also a popular social media service, Twitter, provides various web APIs with geographical search functions.

Taking pictures using GPS-enabled phones or cameras can save location information in an EXIF image file, a process commonly known as “geo-tagging”. EXIF is the standard for storing metadata in image files created by digital cameras, such as date, time, shutter speed and focal ratio,

etc. The POI management system synchronizes non geo-tagged POIs with GPS track logs on the basis of the common date and time attributes. Fig. 4 shows a POI (as a red marker) and the information (in this case a photo, the date and time it was taken, owner's name and tag words) in a popup box.

By using this system, users are not required to carry special devices for field surveys such as professional GPS, GPS-enabled phones or cameras. The system also supports the use of geo-tagged images to extract the embedded location information.

The results displayed in the OpenLayers interface, the GPS points and POIs, can be exported as KML and GPX formats for further use on other GIS applications. For example, an exported KML is displayed in Google Earth in Fig. 5. Recently, since OGC has adopted the OGC KML Encoding Standard (The Open Geospatial Consortium 2007), many applications have supported KML, among which ESRI ArcGIS¹⁰, Flickr, Yahoo! Pipes¹¹, NASA WorldWind¹² and Microsoft Bing Maps¹³. Therefore, KML is provided by the system here described as a good solution for letting different applications interoperate.

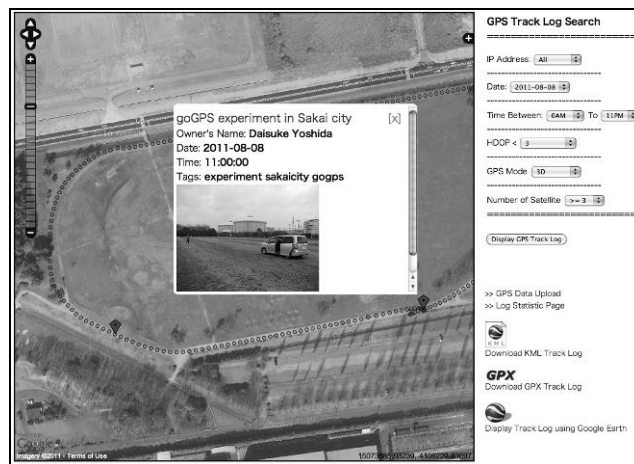


Fig. 4 POI and GPS track log displayed in OpenLayers interface



Fig. 5 Displaying exported KML using Google Earth

2.4 Quality-based data selection

The web-based track log management system has on-the-fly functions to filter GPS data by quality related parameters such as number of satellites, DOP and fix mode. “Fix” is a term commonly used for consumer GPS devices that indicates the action of computing a position (e.g. “time-to-first-fix” or “TTF” indicates the time the receiver needs to compute a position after having been switched on). This is not to be confused with the fixing of ambiguities, which are

¹⁰ <http://www.arcgis.com/home/>

¹¹ <http://pipes.yahoo.com/pipes/>

¹² <http://worldwind.arc.nasa.gov/java/>

¹³ <http://www.bing.com/maps/>

typically referred to as “fixed” as opposite to “float”. GPS positioning needs at least four satellites to calculate a “3D fix” position, which includes altitude. The calculation using three satellites performs “2D fix” positioning. Some receivers even record GPS data under “no fix” status (e.g. the quality of the signal was lower than a chosen threshold, so the positioning is labeled as “no fix”) thus many noisy positions can be displayed on the web map. The web system provides an interactive web interface to check the parameters and results at the same time in order to remove such noisy data from the plot. Fig. 6 shows the effectiveness of Horizontal DOP (HDOP) based data selection, on a dataset surveyed at car speed in urban environment. Fig. 6a indicates the result without HDOP based data selection. It displays a lot of noisy data at the beginning point because the GPS receiver was just switched on and it was not getting good geometries of satellites at the moment. In contrast, Fig. 6b shows a HDOP based data selection result, in which noisy data were reduced and points were more defined.



Fig. 6 Result of HDOP based data selection in OpenLayers interface (a) Before data selection (b) HDOP data selection result

2.5 Kalman filter DOP

Using the HDOP as an index for removing poorly positioned points has the major drawback of taking into account only the satellite geometry. This information can be useful if the sky visibility condition is always the same, but in urban environments the actual positioning accuracy is highly dependent on the signal quality, especially when using high-sensitivity GPS devices. This means that the receiver can track a high number of satellites, maybe also with a good geometry, even in situations where the signal is highly degraded: in this case the HDOP would not be a good indicator of the actual positioning quality. To overcome this limitation, goGPS does not compute only usual DOP values, which depend only on the satellite geometry, but it produces also customized DOP indices based on the actual quality of the position estimation. According to the definition given by Spilker (1996), DOP values originate from the coordinate co-factor matrix Q . This is obtained from the least-squares design matrix A as (Hofmann-Wellenhof et al. 2007)

$$Q = (A^T A)^{-1} \quad (1)$$

thus for example the traditional Position Dilution of Precision (PDOP) is

$$PDOP = \sqrt{q_x + q_y + q_z} \quad (2)$$

where q_x , q_y and q_z are respectively the X , Y and Z weights along the main diagonal of Q . In order to have indices that represent how the filter is performing, we exploit the coordinate error covariance matrix C estimated by the Kalman filter, i.e.

$$C = (I - GA)K \quad (3)$$

with I the identity matrix, G the Kalman filter gain matrix and K the coordinate error covariance matrix based on dynamics only. More specifically, the covariance matrix K is computed by propagating the coordinate error of the previous epoch to the current one through the Kalman filter transition matrix and then adding the contribution of an a priori defined model error. However, what is really crucial here is that the gain matrix G depends on the observation error covariances that in goGPS are modelled not only as a function of the satellite elevation but also of the signal-to-noise ratio (Realini 2009). The PDOP value obtained from the Kalman filter coordinate error covariance matrix (from now on KPDOP) is computed as

$$KPDOP = \sqrt{c_X + c_Y + c_Z} \quad (4)$$

where c_X , c_Y and c_Z are respectively the X , Y and Z variances along the main diagonal of C .

As for the Kalman-based horizontal and vertical DOP values, respectively KHDOP and KVDOP, they are computed by following the same logic of traditional HDOP and Vertical DOP (VDOP), i.e. propagating the covariance from a global (X , Y , Z) to a local (East, North, Up) reference frame by the equation

$$C_{ENU} = RCR^T \quad (5)$$

where R is the rotation matrix from global to local frames, thus obtaining

$$KHDOP = \sqrt{c_E + c_N}, \quad KVDOP = \sqrt{c_U} \quad (6, 7)$$

where c_E , c_N and c_U are respectively the East, North and Up variances along the main diagonal of C_{ENU} . In this way we obtain alternative DOP indexes that can better describe the positioning quality obtained by the Kalman filter. K*DOP values do not depend exclusively on satellite geometry, but also on the evolution of the filter itself, which includes for example the variance increment for slipped satellites.

goGPS and the web-based track log management system have been made interoperable by adding NMEA output capability to goGPS, and by tuning the parsing algorithm on the web-based system. Since the NMEA 0183 specifications include the possibility to define customized (usually vendor-specific) sentences to provide additional information not encompassed by standard sentences, a customized sentence was defined to output KPDOP, KHDOP and KVDOP values in NMEA format.

3. Tests for quality-based data selection

Some tests were performed in order to check the performance of the KHDOP index compared to the standard HDOP and to verify the feasibility and performance of raw data positioning in low-density and high-density urban environments.

The first example presented here, surveyed by car in low-density urban environment in Italy, was chosen because part of it was recorded on the first floor of a two-story parking structure, providing a sudden change from good sky visibility to no sky visibility at all. Since the GPS device used was a u-blox AEK-4T, its high-sensitivity allowed for signal reception and positioning even with the highly degraded signal inside the parking structure. Fig. 7 shows the complete track without data selection (the parking structure is in the bottom right-hand side of the image), while Fig. 8 shows the comparison between HDOP-filtered and KHDOP-filtered tracks.



Fig. 7 Complete tracks of experiment (circles) are displayed

The positioning inside the parking structure was very bad due to the lack of sky visibility, but the HDOP-filtered track (Fig. 8a) keeps some of its points even when the threshold is very low. By using such a strict threshold on HDOP, based on satellite geometry only, part of the outdoor track is deleted although it is much more accurate than the indoor track. On the other hand, the track filtered by KHDOP (Fig. 8b) effectively removes only the points surveyed within the parking structure, leaving unchanged the rest of the track.

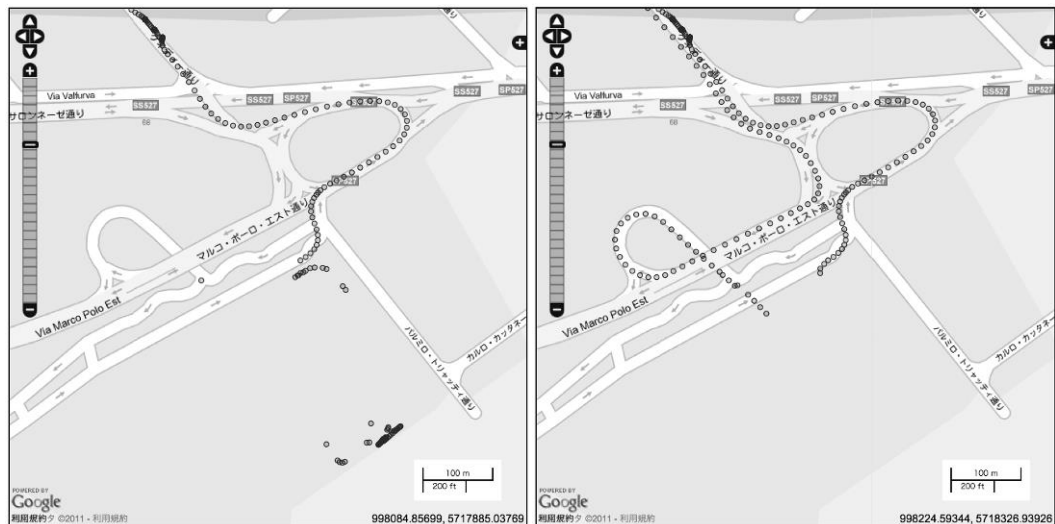


Fig. 8 GPS tracks are selected by DOP (a) HDOP-filtered track (b) KHDOP-filtered track

Fig. 9 shows the differences in the two DOP values for the whole survey. The Y-axis indicates the level of the DOPs and X-axis is for GPS time. In the graph, it is clear that KHDOP well describes the quality of the GPS signal under poor conditions (e.g. inside parking, under trees or some other obstacles), thus for discriminating between poorly positioned points and points with higher accuracy. Other tests have been performed, confirming the better performance of the KHDOP over the HDOP as an indicator of the positioning quality.

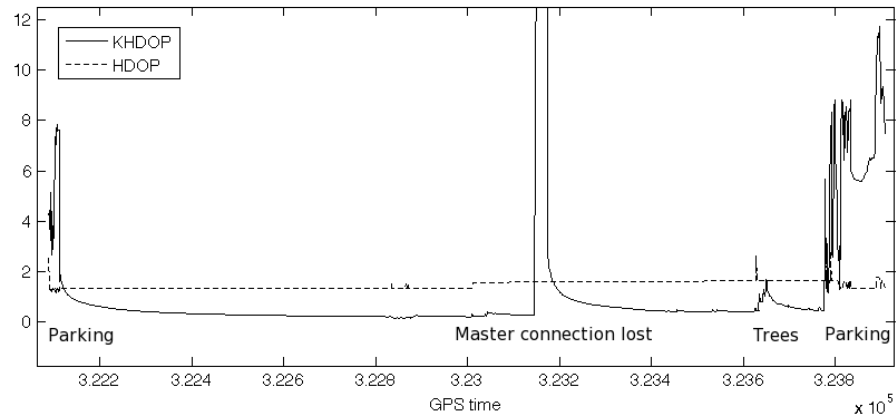


Fig. 9 HDOP versus KHDOP for the whole surveying time span

The other test was conducted in high-density urban environment in Japan. Fig. 10 shows a path, taken by car in Osaka and Sakai cities with a TOPCON dual frequency receiver, which indicates good sky visibility as yellow and bad visibility as red. The result of the test was shown in Fig. 11, comparing the HDOP and KHDOP values in the “good” and “bad” sections in terms of mean, standard deviation and RMSE. The plots clearly show that KHDOP indicates a more significant difference than HDOP between "good" and "bad" sections, indicating that it may be more suitable for determining the positioning quality when using high-sensitivity receivers in urban environment.

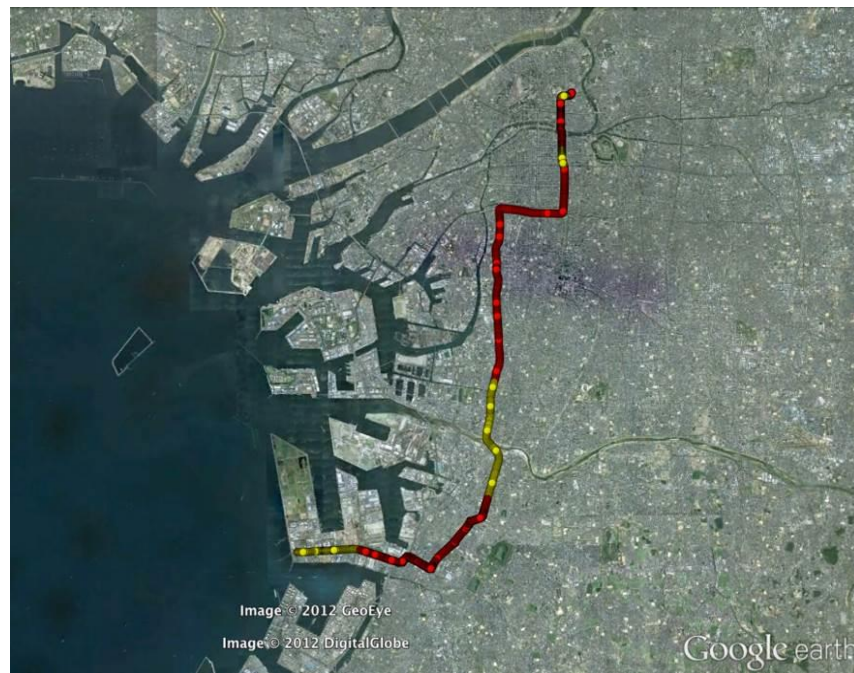


Fig. 10 “Yellow” sections indicate good sky visibility, and “red” ones show bad visibility in Osaka and Sakai cities, detected by a TOPCON dual-frequency receiver

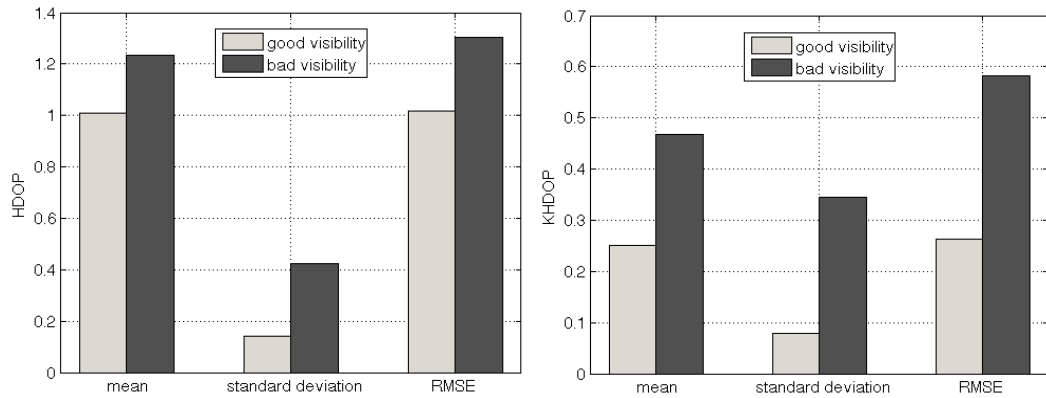


Fig. 11 HDOP versus KHDOP in mean, standard deviation and RMSE

4. Conclusions

In this article, a web system that utilizes the goGPS positioning service is described, also showing how other services can be connected or merged to it, giving rise to the so called "Mashups" or "Chains". The integration of web technologies with GPS positioning enhances interoperability of the positioning service. In particular, in this research, goGPS positioning services and a web-based track log management system are made interoperable in order to increase the usability of goGPS; the accuracy of the final result is enhanced by introducing a new technique to disregard low quality position estimates, relying on Kalman filter based DOP values (KPDOP, KHDOP and KVDOP), which are effective alternatives to traditional DOP values.

The integrated system does not only facilitate a collaborative framework for building POIs, but also improve accuracy and reduce costs in current GPS receivers. The outcomes of this research can contribute to make highly accurate location data closer to consumer-level users by providing open and standardized positioning services. Finally, the obtained results show that RTK positioning based on low cost receivers can guarantee good accuracy and reduce costs on deploying high-quality LBS.

Acknowledgements

The authors acknowledge the positioning services IREALP GPS Lombardia (Italy) and JENOBA (Japan) for their support. This research was supported by the JSPS Grant-in-Aid for Scientific Research (Issue No. 2109737) entitled "Development of Ubiquitous LBS Web-Service using Free and Open Source Software". The authors would like to express our gratitude to Dr. Terence Henares, researcher at Osaka Prefecture University, for carefully reviewing this paper.

References

- Fenoy G, Bozon N, Raghavan V (2012) ZOO project: The open WPS platform. Applied Geomatics, DOI: 10.1007/s12518-011-0070-0.
- Grewal M S, Andrews A P (2001) Kalman Filtering: Theory and Practice Using Matlab. John Wiley & sons, Ltd.
- Hofmann-Wellenhof B, Lichtenegger H, Wasle E (2007) GNSS Global Navigation Satellite Systems: GPS, GLONASS, Galileo, and more. Springer, Wien 262-266.
- Kalman R E (1960) A New Approach to Linear Filtering and Prediction Problems. Transaction of the ASME - Journal of Basic Engineering 35-45.
- Leclerc Y G, Reddy M, Iverson L, Eriksen M (2001) The GeoWeb - A New Paradigm for Finding Data on the Web. In Proceedings of the International Cartographic Conference.

Pertusini L, Realini E, Reguzzoni M (2010) goGPS: accurate road mapping using low-cost GPS receivers. In Proceedings of GIS-IDEAS 2010, Hanoi, Vietnam 5: 67-72.

Realini E (2009) goGPS - free and constrained relative kinematic positioning with low cost receivers. Dissertation, Politecnico di Milano.

Realini E, Yoshida D, Reguzzoni M, Raghavan V (2012) Enhanced satellite positioning as a web service with goGPS open source software, Applied Geomatics, Vol. 4, No. 2, pp. 135-142.

Spilker J J (1996) Satellite Constellation and Geometric Dilution of Precision. Global Positioning System: Theory and Applications, 1, American Institute of Aeronautics and Astronautics (AIAA), Progress in Astronautics and Aeronautics 163:177-208.

The Open Geospatial Consortium (2007) OpenGIS® Keyhole Markup Language (KML) Implementation Specification Version 2.2.0. <http://www.opengeospatial.org/standards/kml/>. Accessed 07 Aug 2011

The Open Geospatial Consortium (2003) OpenGIS® Web Processing Service (WPS) Implementation Specification Version 1.0.0. <http://www.opengeospatial.org/standards/wps/>. Accessed 07 Aug 2011

Yoshida D, Song X, Raghavan V (2010) Development of track log POI management system using free and open source software. Applied Geomatics 2(3): 123-135.

Yoshida D (2011) Development of processing services for GPS accuracy enhancement by data filtering and kinematic relative positioning. Dissertation, Graduate School for Creative Cities, Osaka City University.